

5th Battalion, 4th Air Defense Artillery Regiment Shipton Kaserne — USAG Ansbach, Germany



5-4 ADA Welcome and Relocation Resource Guide 2018-2019



TABLE OF CONTENTS

X	Cover Page
XX	Table of Contents
I	Introduction 5-4 ADAR Battalion Command Team Welcome Letter (MFR)
II	Key PCS to Germany Information US Army Garrisons in Europe Sponsorship Army Career Tracker (ACT) DA 5434 Unit assigned Sponsor Family EFMP screening Orders Driving and License Shipping HHG, Auto, Pets Driver's License Transportation / Arrival Air Travel Mil / CIV Sponsor expectations Auto Rental Financial Considerations Euro vs USD
III	USAG Ansbach (On-Post) Installation Maps Services and Agencies Housing Community Bus schedule Schools / DoDDDES School and CYS Registration
IV	Ansbach (Off-Post) City Map History
V	Phone Dialing Information



I INTRODUCTION

5-4 ADA Battalion Command Team Welcome Letter

Dear Soldier,

Welcome to the 5th Battalion, 4th Air Defense Artillery Regiment! This is an exciting time to be an Air Defender in Europe and a member of the 5-4 ADA team as we activate the newest Short Range Air Defense (SHORAD) Battalion in the Army.

Located on Shipton Kaserne in Ansbach, Germany, 5-4 ADA will rapidly generate combat power for the US Army Europe (USAREUR) Commander to fill a much needed gap in the air and missile defense coverage. As a member of our team, you will have a significant role in forming this battalion and returning SHORAD capability to the various maneuver formations in USAREUR.

Transitioning to an assignment in Europe can be challenging and you or your family likely have several questions. Our team is here to support you from assignment notification through integration into the unit and all the way until your tour in Germany is complete. During this phase, your primary point of assistance will be your sponsor. Additionally, your new chain of command, family readiness group leader, and the local community organizations will be happy to help anyway they can.

You can find additional information in our digital welcome packet located on our battalion's website at <http://www.10thaamdc.army.mil/5-4ADA/> and our Facebook page at www.facebook.com/54ADABN. United States Army Garrison Ansbach (USAG-A) website can be found at <http://www.ansbach.army.mil/index.html> which contains information about the local area and what to expect upon arrival. The 10th Army Air and Missile Defense Command (AAMDC) web page at <http://www.10thaamdc.army.mil/> has a "Newcomers" tab which is another good resource to explore as you prepare for your transition. While the 10th AAMDC "Newcomers" tab is oriented to the Rhineland Phalz garrison, much of the information is transferable to the Ansbach garrison, such as driver's license requirements, study material, and testing. Please explore the above websites and continue to visit the 5-4 ADA website and Facebook pages as we will continually update them with new information.

Again, welcome to the newest SHORAD battalion in the Army! Feel free to contact your sponsor or your new chain of command for any additional questions or special assistance. We look forward to having you on the team.

BY DARING DEEDS!

GEORGE A. PALMER
CSM, USA
Command Sergeant Major

TODD M. DANIELS
LTC, AD
Commanding



II KEY PCS TO GERMANY INFORMATION

U.S. Army Garrisons in Europe

The garrisons in Europe are managed by the Installation Management Command Directorate - Europe.

Belgium



Benelux



U.S. Army Garrison Benelux

Covers the Chievres, Brunssum, Brussels and Dülmen communities

Italy



Italy



U.S. Army Garrison Italy

Covers the Camp Darby and Vicenza communities

Germany



Wiesbaden

Ansbach

Rheinland-Pfalz

Bavaria

Stuttgart



U.S. Army Garrison Ansbach

Consists of nine posts in the Franconia region: Barton Barracks, Bismarck Kaserne, Bleidorn Kaserne, Franken Kaserne, Katterbach Kaserne, Oberdachstetten Training Area, Shipton Kaserne, Storck Barracks and Urfas Communities.



U.S. Army Garrison Bavaria

Covers the Grafenwoehr, Vilseck, Hohenfels and Garmisch communities



U.S. Army Garrison Rheinland-Pfalz

Covers the Kaiserslautern, Landstuhl, Baumholder, Sembach, Gernersheim, Grünstadt, Miesau, Mannheim and Pirmasens communities



U.S. Army Garrison Stuttgart

Composed of five installations spread throughout the greater Stuttgart metropolitan area: Patch, Panzer, Kelley and Robinson Barracks and the Stuttgart Army Air Field



U.S. Army Garrison Wiesbaden

Headquartered at Lucius D. Clay Kaserne and services 15 installations and housing areas around Wiesbaden, to include the Dagger Complex in Darmstadt; a small housing area and a training site in Mainz; and McCully Support Center in Wackernheim



SPONSORSHIP

No matter how many times you've PCS'd or even if you've been assigned to United States Army Garrison Ansbach before, you need to make contact with your sponsor to make sure you're aware of the latest in-processing policies and requirements BEFORE you arrive. Not only is it a good idea, it is a DA requirement for all Soldiers, O-6 and below, to be assigned a sponsor prior to their arrival at their new duty station.

Your sponsor is the key to your successful PCS! He or she will save you valuable time and hassle before, during and after your arrival. To assist Soldiers sponsoring incoming families, we have established youth and spouse sponsorship programs. These programs work with your Soldier sponsor to provide a comprehensive sponsorship experience and ensure the entire family is welcomed appropriately. Talk to your Soldier sponsor about the youth and spouse sponsorship programs today!

Your assigned unit will appoint you a sponsor. You will need to log on to the Army Career Tracker, Total Army Sponsorship Program (TASP) Module from a government computer and complete required information in order to help your unit assign an appropriate sponsor. To log on to the Army Career Tracker site, go to: <https://actnow.army.mil>

ORDERS

Once you have your orders, email a copy to your sponsor and the unit will get you slotted into the Ansbach in-processing classes and setup a mailbox for you. Additionally, this will aid in getting your Driver License if you have completed the training and certification before your arrival.

FAMILY EFMP SCREENING

Those will family members and who want to have them travel to Germany "Command sponsored" must complete the EFMP screening at a Military Treatment Facility. Plan ahead as this screening and process can take additional time.



SHIPPING HHG, AUTO, PETS

Transportation (Household Goods and Vehicle Shipping)

Logistics Readiness Center-Ansbach (LRC-A), 405th AFSB

Main Office – Barton Barracks

Hours: Mondays – Fridays 8 a.m. – 4 p.m. Commercial: 0981-183-7705

DSN: 468-7705

Non-Tactical Vehicle Dispatch

Hours: Mondays – Fridays 8 a.m. – 4 p.m. Commercial: 0981-183-1800

DSN: 468-1800

405th AFSB, Logistics Readiness Center web page

Inbound and Outbound Household Goods (Managed by LRC-A, 405th AFSB)

Katterbach Kaserne

Commercial: 09802-83-3704 / 3705 / 3707 / 3708

DSN: 467-3704 / 3705 / 3707 / 3708

Hours:

Mondays – Thursdays 8 a.m. – 3 p.m.

Fridays 1 – 3 p.m.

Vehicle (Privately Owned Vehicle (POV)) Shipping (Managed by LRC-A, 405th AFSB)

Barton Barracks

Commercial: 0981-183-7255

DSN: 468-7255

Hours:

Mondays – Fridays 8 a.m. – 4 p.m.

Closed German, U.S. holidays

Changes to POV Shipping come in effect May 1, 2014 [Read More »](#)

New POV tracking website: [PCS my POV](#)

Old POV tracking website: [Where is my POV](#)

This POV tracking website will go out of service when all vehicles in their possession are delivered



DRIVING AND LICENSE

Drivers Licensing, testing (managed by 405th AFSB)

Katterbach Kaserne

Commercial: 09802-83-3700 / 3701 / 3702

DSN: 467-3700 / 3701 / 3702

Hours:

Mondays 7:30 a.m. – 3:30 p.m.

Tuesdays 7:30 – 3:30 p.m. (except if Motorcycle testing is scheduled)

Wednesdays, Thursdays 1 – 3:30 p.m., closed mornings for orientation and testing

Fridays 1 – 3:30 p.m., closed in morning for training.

Useful resources on driving in Europe are available on the USAG Ansbach website at http://www.ansbach.army.mil/Newcomers.html#Drivers_Licensing

Drivers Handbook and Examination Manual for Germany (PDF)

Drivers Handbook and Examination Manual for Germany (Flip Book)

Driving in Europe Videos

European Road Signs Pocket Pamphlet

USAREUR Driving Safety Training

European Commission on Road Safety and Road Traffic Rules for Germany

Winter Driving Training Presentation (English)

Winter Driving Training Presentation (Deutsch)

Taking your USAREUR Driver's License Exam online prior to arrival

- All CAC card holders can now take the training and the test on line.
- To do so, register your CAC to JKO at: JKOdirect.mil Web Site You can also establish a guest account for your dependents on JKO so they too can take the training in test before arrival. You may have to wait up to 3 days until your JKO account is active.
- The course numbers are USA-007 “U.S. Forces Driver’s Training Program for Europe (2 hrs)”, USA-007B “U.S. Forces Driver’s Training Program for Europe – Final Course Exam (2 hrs)”
- Upon completion of the training you will receive a certificate
- Upon completion of the actual test you will receive a second certificate
- A minimum of two days is required for your scores to get into the DTTS System
- In order to check your results, contact the DTTS office at DSN 483-7332 and provide them with your DOD ID number from the back of your CAC
- To receive your license, visit the DTTS office with your ID card, U.S. license, and a \$10 check or credit card
- Note: An eye test is required, which will be done at DTTS.

To drive a vehicle while stationed in Germany you should have a valid U.S. drivers license and a valid U.S. Forces certificate of license (USAREUR Drivers License). This means that neither should be expired. If one or the other is expired you may be considered as operating a vehicle without a license.



TRANSPORTATION / ARRIVAL

Air Travel Mil / CIV and Sponsor expectations

All Soldiers and most families arriving in Germany on Permanent Change of Station (PCS) orders will arrive at the Ramstein Gateway Reception Center via Air Mobility Command's military chartered airlift, The Patriot Express. Flights depart from BWI Airport, AMC Terminal and arrive at Ramstein Air Base, Germany. USAREUR Command Policy requires that all personnel and accompanying family members process through the Soldier and Family Reception Center. Exceptions can be granted by an O-6 in the losing or gaining Command for specific reasons. Personnel will be available in the baggage claims to expedite this process.

Your sponsor and/or unit representative will be present to pick you up upon arrival. If not, you will be transported by the "S Bus" to the Garrison Personnel Office, where you will be met by Garrison staff.

AER 612-1, Community Central In-and Out-processing, stipulates that all Soldiers, O-6 and below, and DA civilians, GS-15 and below, will complete all portions of in-processing. In-processing typically last between 12-15 days after arrival. Please plan accordingly, especially if you are a senior leader, as your unit may schedule appointments for you when you are supposed to be at in-processing.



FINANCIAL CONSIDERATIONS

Military banking and credit union facilities are available in the Ansbach Community to meet your personal financial needs. They offer checking and savings accounts, foreign currency exchange, personal loans, certificates of deposit, euro bill-paying services and travelers checks in dollars and most European currency denominations.

The Ansbach Community currently supports several 24-hour Automatic Teller Machines, located at the banking center and at various sites throughout the community.

All ATMs allow you to make withdrawals in dollars or euros. Customers who make euro withdrawals buy them at that day's exchange rate. ATMs also accept government-issued credit cards for cash advances for travelers. ATM cards will also work in local German ATMs (Geldautomaten).

The monetary unit in Germany is the euro. Exchange rates between the dollar and the euro usually change daily and are announced on us American Forces Network (AFN) TV and radio and are posted at community banking facilities and most retail outlets that service Americans.

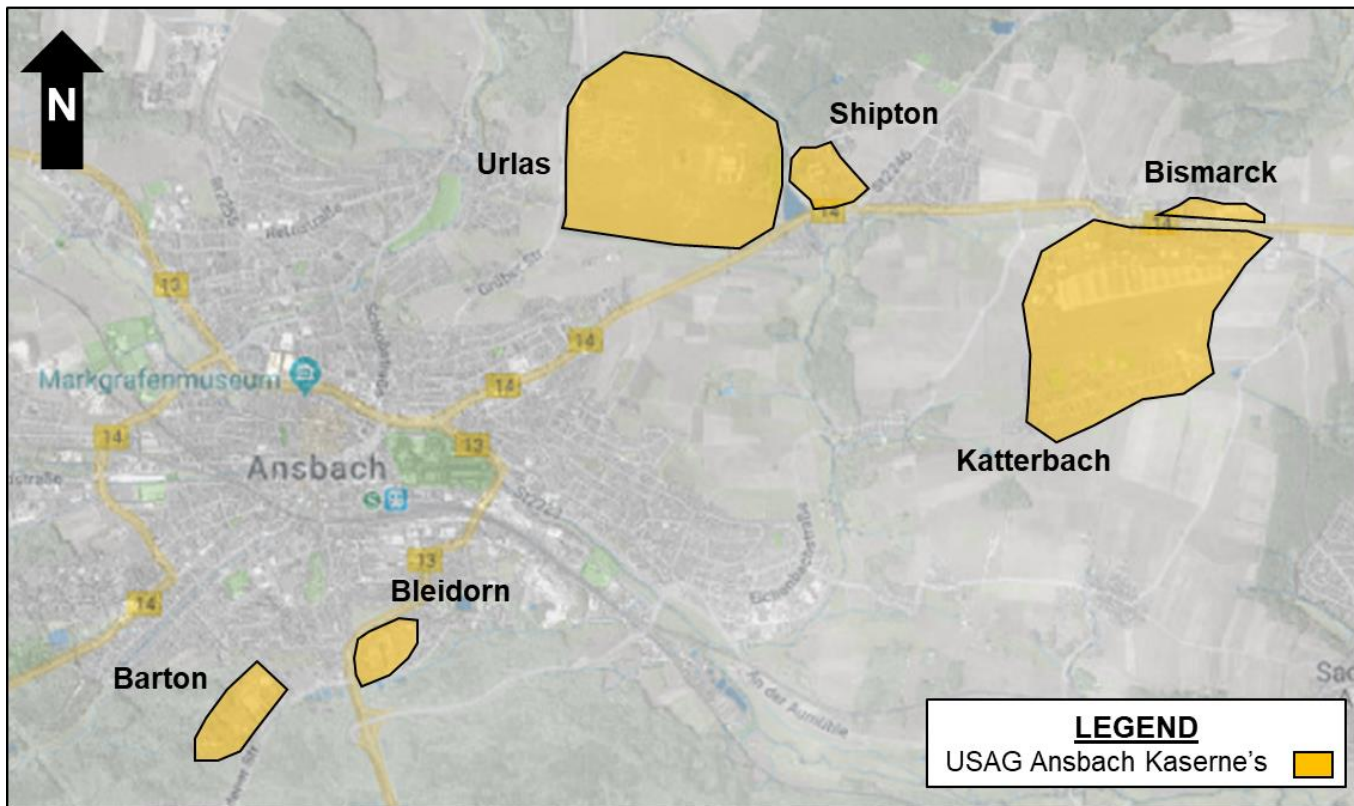
The euro is the currency of twelve European Union countries, stretching from the Mediterranean to the Arctic Circle (namely Belgium, Germany, Greece, Spain, France, Ireland, Italy, Luxembourg, the Netherlands, Austria, Portugal and Finland).

Euro banknotes and coins have been in circulation since Jan. 1, 2002 and are now a part of the daily life for over 300 million Europeans living in the euro area. There are seven different denominations in the current euro banknote series, ranging from the €5 to the €500 notes.

The notes' designs are the same throughout the euro area and feature windows and gateways (on the front) and bridges (on the reverse) from different periods in Europe's architectural history.



INSTALLATIONS MAP



SERVICES AND AGENCIES

HOUSING

Katterbach Kaserne

Katterbach Kaserne has on its grounds the Central Processing facility (CPF) for in and out processing, a child development center, an elementary school, the middle/high school, a fitness center, a chapel, a US post office, two banking facilities, a shoppette, and Army family housing.

Bleidorn Kaserne

Bleidorn Kaserne, commonly known as Bleidorn Housing, is made up of Army family housing, a library, and our community theater, the Terrace Playhouse.

Urlas Kaserne

Urlas Kaserne is the centerpiece of USAG Ansbach. Urlas Kaserne has been repurposed and now is home to a new Post Exchange with food court, a new Commissary, Military Clothing Sales, Barber Shop, Dry Cleaners, Flower shop, Ansbach Army Lodge Brainard Hall, a gas station, an auto skills center with car wash and dog wash, and brand new townhome style Army family housing, and medical and dental clinics.

COMMUNITY BUS SCHEDULE

This will change to include Sipton as 5-4 ADA grows.

Shuttle Bus Schedule

Barton Barracks, Bleidorn Barracks, Urlas Community, Katterbach Kaserne
Effective April 10, 2017

Locations	Times									
Barton Barracks	8:07 a.m.	7:20 a.m.	8:32 a.m.	10:30 a.m.	11:54 p.m.	1:10 p.m.	2:30 p.m.	4:20 p.m.	6:05 p.m.	
Library, Bleidorn	8:12 a.m.	7:25 a.m.	8:37 a.m.	10:35 a.m.	11:59 p.m.	1:15 p.m.	2:35 p.m.	4:25 p.m.	6:10 p.m.	
Army Lodge, Ullas	8:29 a.m.	7:39 a.m.	8:51 a.m.	10:49 a.m.	12:13 p.m.	1:29 p.m.	2:49 p.m.	4:39 p.m.	6:24 p.m.	
Post Exchange, Ullas	-	-	-	10:51 a.m.	12:15 p.m.	1:31 p.m.	2:51 p.m.	4:41 p.m.	6:26 p.m.	
Katterbach- Loop 2	8:35 a.m.	7:48 a.m.	9:00 a.m.	11:01 a.m.	12:25 p.m.	1:40 p.m.	3:00 p.m.	4:50 p.m.	6:35 p.m.	
Shoppette, Katterbach	8:37 a.m.	7:50 a.m.	9:02 a.m.	11:03 a.m.	12:27 p.m.	1:42 p.m.	3:02 p.m.	4:52 p.m.	6:38 p.m.	
Katterbach, Bismark	8:39 a.m.	7:52 a.m.	9:04 a.m.	11:05 a.m.	12:29 p.m.	1:44 a.m.	3:04 p.m.	4:54 p.m.	6:40 p.m.	
Health Clinic, Ullas	8:45 a.m.	7:58 a.m.	9:10 a.m.	11:11 a.m.	12:35 p.m.	1:50 a.m.	3:10 p.m.	5:00 p.m.	6:46 p.m.	
Army Lodge, Ullas	8:48 a.m.	7:59 a.m.	9:12 a.m.	11:13 a.m.	12:37 p.m.	1:52 p.m.	3:12 p.m.	5:02 p.m.	6:48 p.m.	
Post Exchange, Ullas	-	-	-	11:15 a.m.	12:39 p.m.	1:54 p.m.	3:14 p.m.	5:04 p.m.	6:50 p.m.	
Library, Bleidorn	7:00 a.m.	8:13 a.m.	9:26 a.m.	11:29 a.m.	12:54 p.m.	2:09 p.m.	3:28 p.m.	5:18 p.m.	7:04 p.m.	
Barton Barracks	7:05 a.m.	8:18 a.m.	9:31 a.m.	11:34 a.m.	12:59 p.m.	2:14 p.m.	3:33 p.m.	5:23 p.m.	7:09 p.m.	

- Further information:
- Shuttles run Mondays through Fridays.
 - Shuttles do not run on U.S. or German holidays.
 - All passengers must present ID cards or installation passes. No exceptions.
 - For more information, call 0981-83-1800 / 7755 or DSN 468-1800 / 7755.



Shuttle Bus Schedule

Storck Barracks, Urlas Community, Katterbach Kaserne
Effective March 29, 2016

Locations	Times		
BLDG 6631, Storck Barracks	9 a.m.	11 a.m.	1:20 p.m.
Area Support Team, 5514, Storck Barracks	9:02 a.m.	11:02 a.m.	1:22 p.m.
Katterbach Kaserne, Shopette	9:52 a.m.	11:47 a.m.	2:07 p.m.
Post Exchange arrival, Ullas Community	9:57 a.m.	11:54 a.m.	2:14 p.m.
Post Exchange departure, Ullas Community	9:58 a.m.	12:30 p.m.	2:45 p.m.
BLDG 6631, Storck Barracks	10:42 a.m.	1:15 p.m.	3:30 p.m.

- Further information:
- Shuttles run Mondays through Fridays.
 - Shuttles do not run on U.S. or German holidays.
 - All passengers must present ID cards or installation passes. No exceptions.
 - For more information, call 0981-83-1800 / 7755 or DSN 468-1800 / 7755.



HOUSING

USAG Ansbach Housing Office

Website: <http://www.ansbach.army.mil/HometownLiving.html>

Commercial: 09802-83-3415

DSN: 467-3415

Hours: Monday through Thursday

7:30 a.m. to 3:30 p.m.

Friday 12 p.m. to 3:30 p.m.

closed weekends, U.S. and German holidays

Household Goods Shipment

As you prepare to pack for your new assignment to the Ansbach Community, you'll need to consider the differences that you'll encounter with housing space, storage space and electricity. The current policy requires all Soldiers and families to live in on-post housing. Katterbach and Bleidorm includes "stairwell" apartment style housing, and Urlas includes a small community of duplex houses which are very popular resulting in limited availability.

House Size

The houses and apartments on-post have smaller rooms, hallways and staircases than what you are accustomed to stateside. Therefore, you may have trouble fitting extremely large or heavy furniture into your new home. Be prepared to look for storage if your new place is not big enough to accommodate your furniture.

Electricity

The electrical current in Germany is 220 volts and 50 cycles-per-second, while most American appliances operate on 110 volts and 60 cycles-per-second. You will need a voltage adapter or transformer to use your appliances with American voltage/plugs in German electrical outlets. Every electrical appliance should be marked with its required voltage or wattage to determine the appropriate size transformer to use. Many of the Ansbach housing units have been remodeled to include both 110 and 220 volts outlets.

Most personal computers are dual-voltage and only require an adaptor, but check with your computer's manufacturer to make sure. If your computer has a dual voltage switch, remember to completely unplug the computer before changing voltage otherwise you will burn out the computer power supply.



SCHOOLS / DODDES

Ansbach Elementary School “Cougar Cub Pride”

Website: <https://www.dodea.edu/AnsbachES/index.cfm>

<https://www.facebook.com/AnsbachES>

Description: Ansbach ES is the only elementary school located in Ansbach-Katterbach Kaserne.

Target Audience: Student grades 1st-5th, first day of school 27 August.

Kindergarten first day of school 04 September.

Sure Start is dedicated to providing comprehensive services in the areas of education, health, social services, and family involvement. Children must be 4y/o by 01 September, E1-E4 have program priority, Sure Start application-

https://www.dodea.edu/upload/surestartapp_march18.pdf

Contact Info: 011-49-(0)-9802-83-2628; Registrar E-mail: AnsbachES.Registrar@eu.dodea.edu.

Ansbach Middle/High School “Cougars”

Website: <https://www.dodea.edu/AnsbachMHS/index.cfm>

<https://www.facebook.com/AnsbachMHS/>

Description: Ansbach ES is a joint middle and high school located in Ansbach-Katterbach Kaserne.

Target Audience: Student grades 6th-12th, first day of school 27 August.

Contact Info: 011-49-(0)-9802-83-2808; Registrar E-mail:

AnsbachMHS.Registrar@eu.dodea.edu

CHILD, YOUTH, AND SCHOOL SERVICES

Div/Dept: Support Services

Service(s): Provide programs and services for children of eligible military and civilian families.

Description: Full-time, part time or hourly child care, before and after school care, camps, programs for your middle school and teen youth, instructional classes, workforce preparation opportunities, sports and fitness activities, teen shuttle program, and child development centers.

Location: Katterbach Kaserne, Bldg 9028, Rm 26

Contact Info: Parent Central Services DSN: 467-2533 CIV: 09082-83-2522.

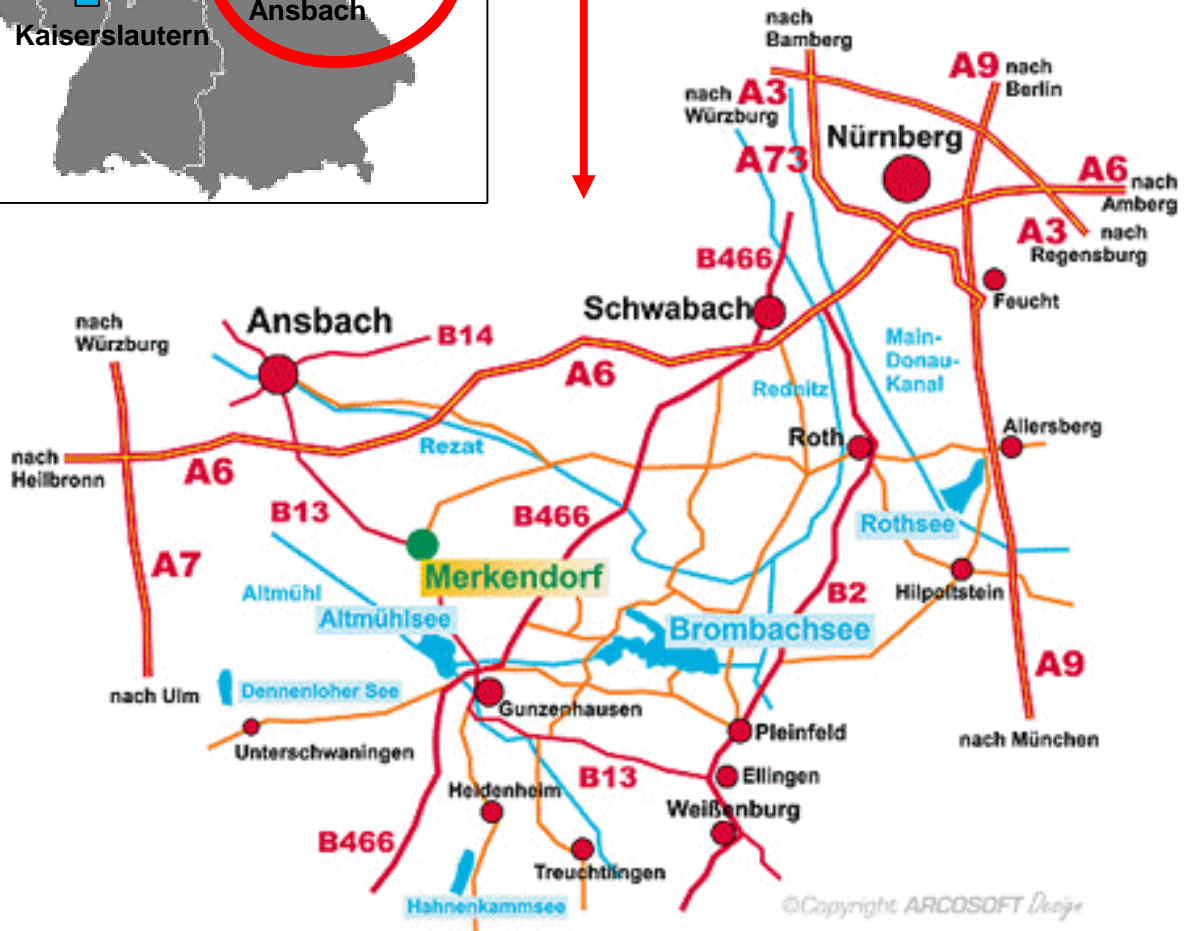
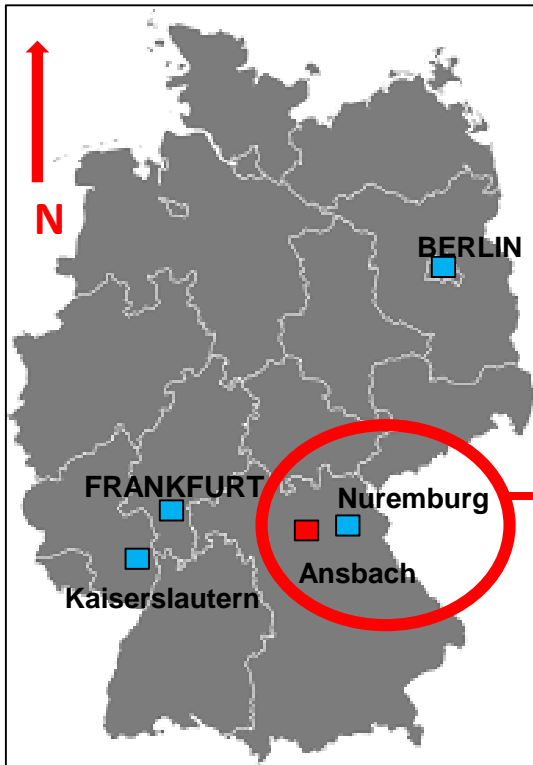
Schedule: To schedule appointment, call or e-mail: usarmy.ansbach.imcom-europe.list.mwr-parent-central@mail.mil. Fridays are walk-in only. Military Child Care is a useful site where you can request care such as CDC, SAC (before/after school), and Summer Camp, log in to www.mcc.com to create and account and click here for more information.

Website: Ansbach CYSS Registration Checklist

To receive 16 FREE hours of childcare during the Host Nation in-processing orientation with ACS, please ensure your children are registered. CONUS paperwork is accepted as long as it has not expired. If registration has expired, upon re-registering, parents have 30 days to submit an updated Health Assessment. Children with health concerns such as asthma and allergies must have updated health paper work.



CITY OF ANSBACH MAP



HISTORY



City of Ansbach History

The City (Stadt) of Ansbach History: Stadt Ansbach - Margravian residential city in Middle Franconia - Ansbach is located about 25 miles southwest from the celebrated city of Nürnberg and sits in the northern part of Bavaria in an area called Franconia or Franken. Ansbach borders the Franconian Heights Nature Park which has extensive forests and open space and is also a point of interest on the historic German Burgenstrasse or "Castle Road", which extends from Mannheim, Germany to Prague, Czech.

Ansbach is the seat of the district government of Middle Franconia and former residency of the Margrave of Brandenburg-Ansbach and features more than 1270 years of eventful and dynamic history. The earliest known resident was a Franconian settler named Onold. Onold established a household around the year 740 AD near the Rezat River, which runs through what is now Ansbach; at that time the area was called Onoldsbach. Not long after, about 748 AD, a Franconian nobleman named Gumbertus established a Benedictine monastery dedicated to the Virgin Mary within the community of Onoldsbach. While the monastery itself is now a Lutheran church, it still stands today in the old part of town (Altstadt) of Ansbach and bears the name of its Catholic founder, who was later proclaimed a Saint. In the 11th century the monastery was upgraded to a chapter house, and in a document of 1221 Ansbach was mentioned for the first time as a community.



Military Number Dialing Instructions

To call a military number from a Civilian phone:	To call a military number from a military phone:
Barton Barracks 0981-183 +7+ Last 3 (Last 4 for 15XX)	Barton Barracks 468 + Last 4
Bleidorn Housing Area 0981-183 +7+ Last 3	Bleidorn Housing Area 468 + Last 4
Katterbach, Bismarck, and Shipton Kasernes 09802-83 + Last 4	Katterbach, Bismarck, & Shipton Kasernes 467 + Last 4
Storck Barracks 09841-83 + Last 4	Storck (Storck Barracks) 467 + Last 4
	US DSN 312-XXX-XXXX

Civilian Exchange Prefixes

To convert a DSN number to a Civilian number,
dial the Civilian exchange prefix plus the last three or four digits of the DSN number

Ansbach 0981-183-XXXX	Heidelberg/Hospital 06221-17-XXXX	Miesau..... 06372-842-XXXX	US Embassy/Berlin 030-2385-174
Babenhausen 06073-38-XXX	Hohenfels 09472-83-XXXX	Pirmasens..... 06331-86-XXXX	Vogelweh/Kapaun 0631-536-XXXX
Bamberg 0951-300-XXXX	Storck 09841-83-XXXX	Ramstein (USAFE) 06371-47-XXXX	Vilseck 09662-83-XXXX
Baumholder 06783-6-XXXX	Kaiserslautern (Kleber) 0631-411-XXXX	Schweinfurt 09721-96-XXXX	Wiesbaden 0611-4080-XXX
Darmstadt 06151-69-XXXX	Kaiserslautern (Pulaski) 0631-3406-XXXX	Sembach..... 06302-67-XXXX	Vilseck 09662-83-XXXX
Garmisch 08821-750-XXXX	Katterbach 09802-83-XXXX	Spangdahlem 06565-61-XXXX	
Grafenwoehr 09641-83-XXXX	Landstuhl 06371-86-XXXX	Stuttgart..... 07031-15-XXXX	
Heidelberg 06221-57-XXXX	Kapaun Air Station 0631-536-XXXX	US Consulate Frankfurt 069-7535-0	
		US Consulate Munich 089-2888-0	

